

Rosamond Branch Library

EVENTS GUIDE

find us!

3611 Rosamond Blvd.
Rosamond, CA 93560
www.kernlibrary.org

contact us!

email
info@kernlibrary.org
phone
661-256-3236



Sign up for
our e-mail
newsletters!



Find us on social!

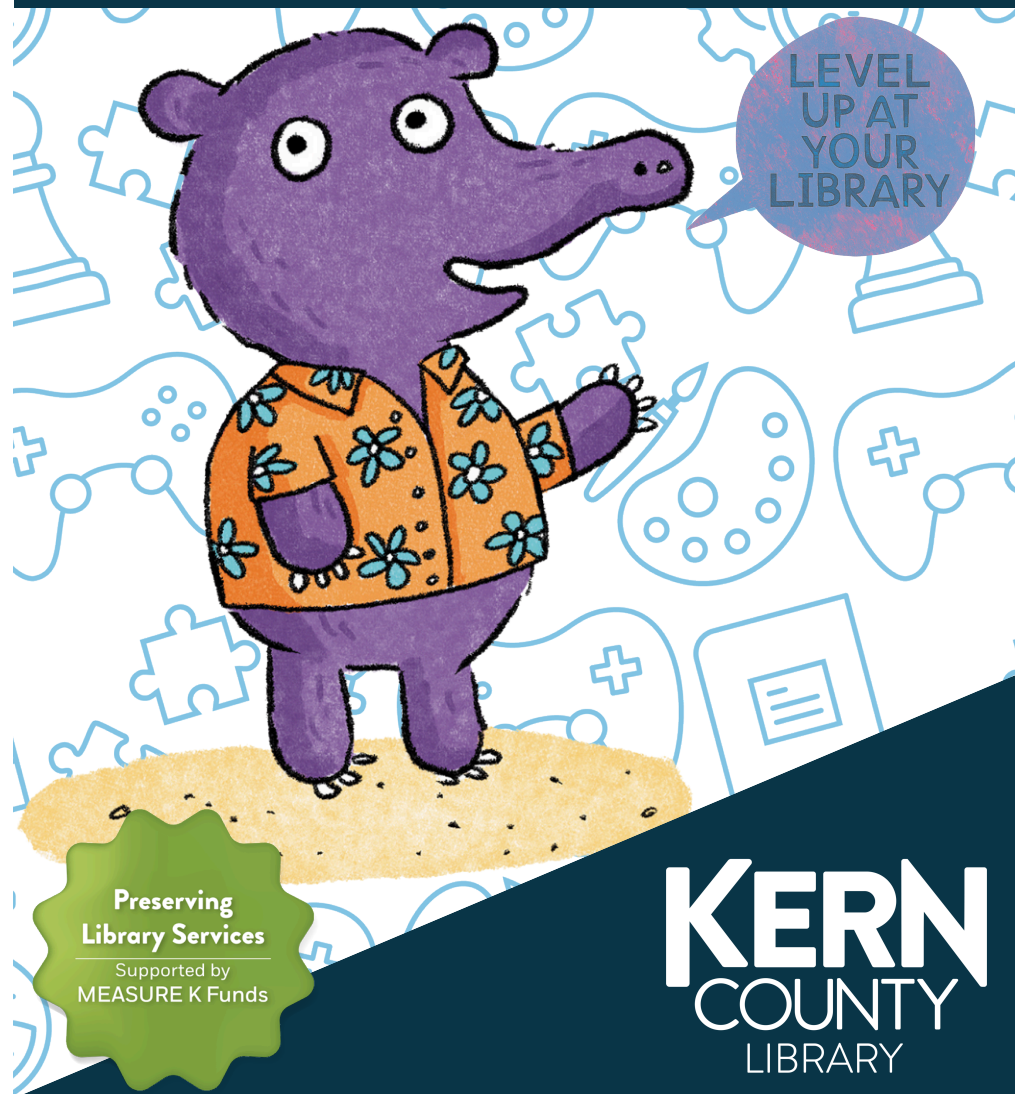


Preserving
Library Services

Supported by
MEASURE K Funds

KERN
COUNTY
LIBRARY

LEVEL
UP AT
YOUR
LIBRARY





Programs in the Community

While the library is closed, offsite programs will be held at the Hummel Hall Community Center located at 2500 20th St W in Rosamond.

Sewing for Beginners

Ages 9+ TUESDAY, JUNE 3RD & 17TH | 3 - 4:30 P.M.
HUMMEL HALL COMMUNITY ROOM 2

If you're new to sewing and/or want to learn how to use your sewing machine, or if you need a refresher course, this class is for you! Please bring your own sewing machine if you have one!

Family Storytime & Craft

Ages 5-11 TUESDAY, JUNE 3RD & 17TH | 4:15 - 5:15 P.M.
HUMMEL HALL COMMUNITY ROOM 2

Join us for an engaging story, silly songs, and a fun craft!

Intermediate/Advanced Sewing (Sewing Club)

Ages 9+ TUESDAY, JUNE 3RD & 17TH | 4:30 - 6 P.M.
HUMMEL HALL COMMUNITY ROOM 2

A class for those who have completed the beginning projects with our instructor or for experienced sewers who want to jump right in. Participate in the planned projects or bring your own. Please bring your own sewing machine if you have one!



For more event information, visit our website - kclevents.org

Library workshops, performances, and events are FREE and open to the public. We're adding more programs all the time!

At times, programs may be rescheduled or canceled without advance notice.

eLibrary

Just a reminder that while our branch may be closed, our eLibrary is always open! Check out the services below for access to a variety of eBooks, eAudiobooks, music, movies, TV shows, and more for free with your Kern County Library card! For a full list of services available, visit: <https://kerncountylibrary.org/elibrary/>



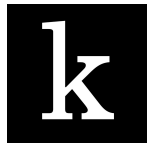
Libby

Libby is a popular platform that offers a variety of eBooks and eAudiobooks! Check it out and download the app today to get access to eBooks and eAudiobooks on your computer, tablet, phone, or eReader!



Hoopla

Hoopla not only offers a variety of eBooks and eAudiobooks but also provides access to comics, magazines, and streaming content, including movies, TV shows, and music!



Kanopy

Kanopy provides access to over 30,000 films and documentaries, as well as select series and children's programs.



Express Services

Patrons may pick up requested items (holds) and receive limited library services outside of the Rosamond Branch Library during the following times:

TUESDAYS 1:30 P.M. - 5:30 P.M.

SATURDAYS 11 A.M. - 3 P.M.

Library services that will be provided during these times include:

- Library card registration and renewal
- CA State Parks Passes checkout
- Narcan distribution
- Sign ups and redemptions for current reading challenges:
 - 1000 Books Before Kindergarten (All Year)
 - Summer Reading Challenge (June & July)
- Access to our new Seed Library
- Take-home craft kits for children, teens, and adults

Express Services are available – weather permitting – and may be canceled or converted to curbside services in the event of bad weather. The exact location of Express Services outside of the branch is subject to change based on weather and ongoing construction. Please follow us on Facebook for updates and refer to posted signage.



LEVEL UP AT YOUR LIBRARY

2025 Summer Reading Challenge

The Summer Reading Challenge is back, and we want everyone to join the fun!

During the months of June and July, participate in our Summer Reading Challenge by reading 10 books or for 10 hours to receive a FREE book from the Friends of the Kern County Library and a bag full of assorted prizes, while supplies last!

Participants will also be entered into a drawing to win one of several larger prizes, so don't miss out!

Open to all ages, the Summer Reading Challenge is a great way to stay engaged and have fun all summer long!

Ready to read? Scan here to sign up on Beanstack.



LUNCH *at the* LIBRARY

Lunch at the Library

In partnership with the Southern Kern Unified School District, the Rosamond Branch Library is offering FREE lunches for kids ages 2-18 in June and July, beginning on Wednesday, June 11th until Friday, July 25th.

Lunch will be held on Wednesdays, Thursdays, and Fridays from 11:30 a.m. to 12:30 p.m. at the Rosamond Recreation Building at Rosamond Park, located at 3200 Glendower St. The following activities will be available during lunch each day:

Wednesdays- Coloring Fun

Thursdays- Storytime

Fridays- Game Day

There will be no lunch held on Thursday, June 19th (Juneteenth) and Friday, July 4th (Independence Day).

This institution is an equal opportunity provider. The Summer Food Service Program is a program of the U. S. Department of Agriculture, administered in California by the California Department of Education. Lunch at the Library is a project of the California State Library, supported with funds from the State of California.

