

find us!

15555 O St.
Mojave, CA 93501

www.kernlibrary.org

contact us!

email
info@kernlibrary.org

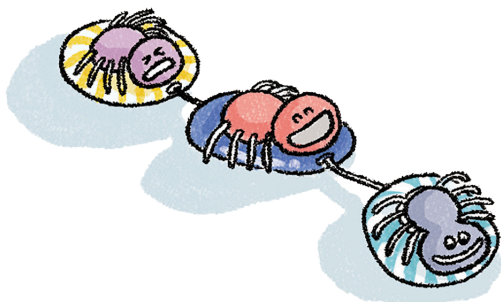
phone
661-615-1003

hours

Tuesday - Thursday 10:00 a.m. - 7:00 p.m.

Friday 10:00 a.m. - 6:00 p.m.

Saturday 10:00 a.m. - 4:00 p.m.



Sign up for
our e-mail
newsletters!



Find us on social!



Mojave Branch Library Teens' EVENT GUIDE



June 2025

KERN
COUNTY
MEASURE K
Preserving Library Services



Events for Teens

Special Events

Retro Board Game Night

Ages 12-18 TUESDAYS @ 4:00 P.M.

Step back in time for a nostalgic evening of fun with a retro board game night, where classic games, friendly competition, and good company come together for a blast from the past!

Video Game Night

Ages 12-18 WEDNESDAYS @ 4:00 P.M.

Get ready for an epic video game night filled with friendly competition, multiplayer fun, and non-stop action—perfect for gamers of all levels to team up or face off!

Diamond Art

Ages 12-18 1ST AND 3RD THURSDAY @ 4:00 P.M.

Unleash your creativity and relax as you bring stunning designs to life with a fun and rewarding diamond art activity!

Perler Beads Art

Ages 12-18 2ND AND 4TH THURSDAY @ 4:00 P.M.

Create vibrant, pixel-perfect designs and let your imagination run wild with a fun and crafty Perler bead art activity



Hula from the Heart 6/7 | 11:00 A.M.

Join us for a memorable experience with a wonderful performance that includes genuine Hawaiian-made implements and instruments, magnificent beauty, tons of fun, and the power of Mana – the Hawaiian term for passion, energy, and connection.

Mark Griffiths: Ventriloquist 6/11 | 12:00 P.M.

The big funny ventriloquist show for the whole family!

California Living Museum 6/17 | 1:00 P.M.

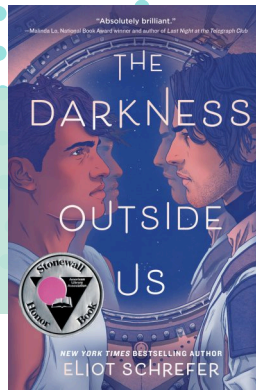
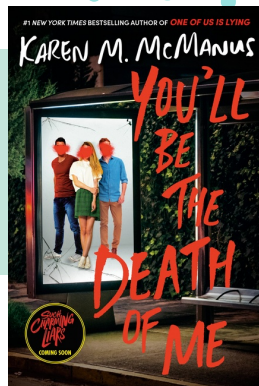
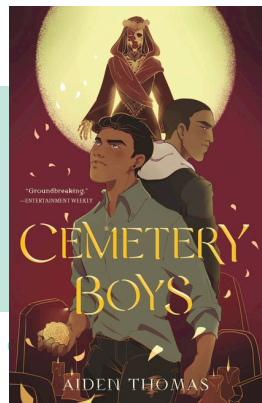
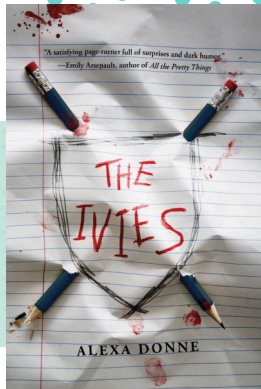
Join us at the library for a special visit from the California Living Museum (CALM)! CALM's expert educators will bring a couple of their animal ambassadors and share fascinating facts about these incredible creatures. Learn about California's native wildlife, their habitats, and how CALM works to rescue and rehabilitate animals in need. This engaging and educational program is perfect for animal lovers of all ages. Don't miss this chance to get up close with some amazing animals and discover the important work CALM does to protect wildlife!

Kern County Museum: Native American Life 6/24 | 1:00 P.M.

Experience the Native American Life's religious beliefs, customs, and how they adapted to their natural environment.

For more event information, visit our website - www.kclevents.org
Library workshops, performances, and events are FREE and open to the public. We're adding more programs all the time! At times, programs may be rescheduled or canceled without advance notice.

Don't know where to start?
Check out these reads available
at your Kern County Library!



Fun for all ages!

Weekly Manifesting

TUESDAYS @ 10:30 A.M.

Add your hopes for this week to our wall, and put it out into the universe.

Nature Walk: Level Up Your Park!

SATURDAYS @ 10:30 A.M.

Join the Mojave Library Staff on a walk around the park as we do our part in keeping things looking great for our community.

Guess: How Many?

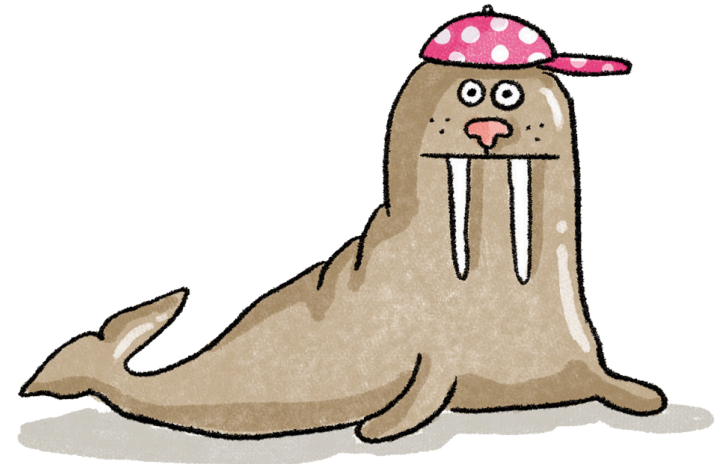
STARTING 6/3 & 6/17 TUES-FRI: ALL DAY

Stop by the Mojave Branch and make your best guess to win a prize!

Community Art Project

STARTING 6/10 & 6/24 TUES-FRI: ALL DAY

Beautify our branch with a new group art piece every other week. Add your own unique flair to leave your mark!



We can't let the little kids have all the fun! Sign up today for our Summer Reading Challenge on the Beanstack app.



Beanstack



LUNCH
— at the —
LIBRARY

In partnership with KCSOS, the Mojave Branch Library is offering FREE lunches for kids ages 2-18 in June and July. Join us for a free meal + fun activities!

This institution is an equal opportunity provider. The Summer Food Service Program is a program of the U.S. Department of Agriculture, administered in California by the California Department of Education. Lunch at the Library is a project of the California State Library, supported with funds from the State of California.