

Teens' EVENTS GUIDE

Tehachapi Branch Library

find us!

212 S. Green Street
Tehachapi, CA 93561

www.kernlibrary.org

contact us!

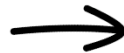
email
info@kernlibrary.org

phone
661-822-4938

hours

Tuesday - Thursday	10:00 a.m. - 7:00 p.m
Friday	10:00 a.m. - 6:00 p.m
Saturday	10:00 a.m. - 4:00 p.m

Sign up for our
email
newsletters!



Find us on social!



KERN
COUNTY
LIBRARY



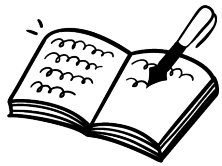
Events for Teens



ASL CLUB (Teen and adult)

Ages 12+ TUESDAYS | 4:00 PM

Explore ASL's unique expressions and build new communication skills that boost literacy in a whole new way - enhancing understanding, vocabulary, and connection. Signers of all levels welcome!



[UNTITLED] WRITING GROUP (Teen and adult)

Ages 16+ TUESDAYS | 6:00 PM

For fiction writers of all levels, genres, and formats. Drop in and write for as long as you can. Once seated, no words but on the page.



YARN CLUB (Teen and adult)

Ages 12+ THURSDAYS | 4:00 PM

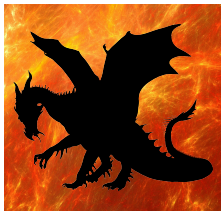
Do you knit? Crochet? Have a closet full of W.I.P.s (works in progress)? Join us as we work and chat. If you don't have a project started, make this month's project. Learn and share with other fiber crafters!



TEEN MANGA CLUB

Ages 12-18 FRIDAY, APRIL 11TH & 25TH | 4:30 PM

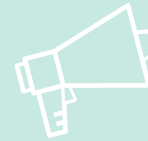
Hang out with other fans to play games, have watch parties, and discuss all things manga and anime!



TEEN D&D

Ages 12-18 SATURDAY, APRIL 12TH & 26TH | 1:00 PM

Create your character, roll the dice, and dive into an epic role-playing quest.



Calling all teens!

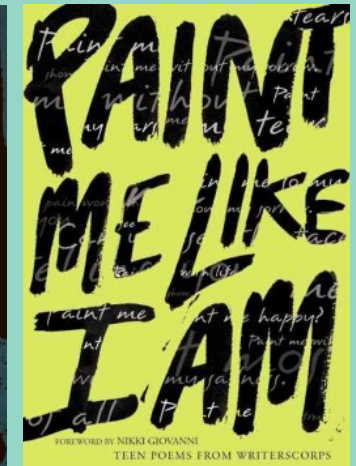
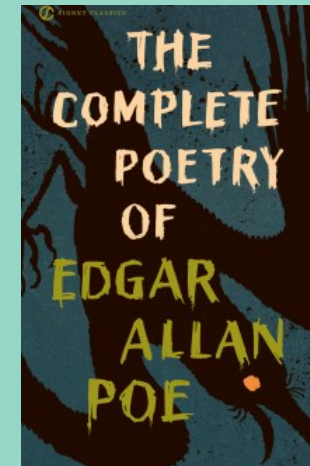
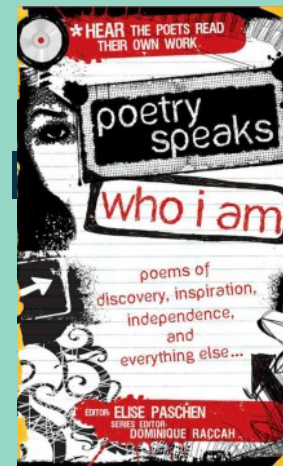


TEEN ADVISORY BOARD

Ages 12-18 WEDNESDAY, APRIL 2ND | 3:30 PM

Come and let us know what you and your friends would like to see at the library. Snacks will be provided.

In honor of Poetry Month



For more event information, visit our website - kclevents.org

Library workshops, performances, and events are FREE and open to the public. We're adding more programs all the time!

At times, programs may be rescheduled or canceled without advance notice.

